



WHERE TECHNOLOGY MEETS **CORE**

COMPAX

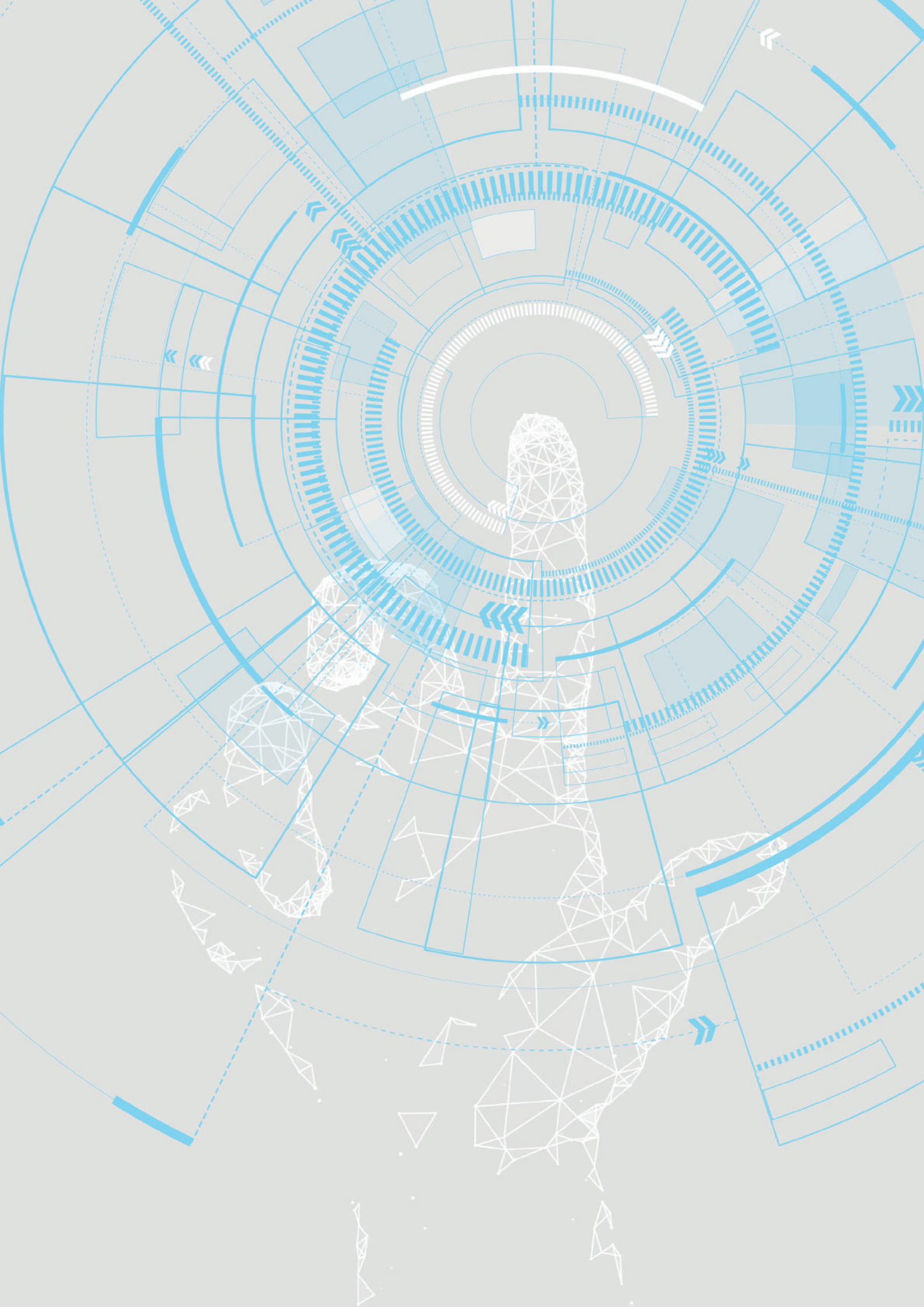


WHERE THE ROOTS LIE IN STATE OF THE ART TECHNOLOGY!

A Pune based company renowned for its Innovative, Reliable and Specially tailored core shop & foundry solution offerings for over past three decades. The dedicated & customer focused Compax team with its continuous R & D efforts has catered to a large number of core making applications with many 'First Time In India' products while pioneering the Cold Box Process applications in India.

In line with its commitment to introduce upgraded technologies and provide competitive business value results to Indian Foundry Industry, Compax is proud to bring European Technology to India through their 3 new German Partners.

Compax Equipments with 'CE' marking were highly acclaimed for the technologies employed to enhance the core shop productivity at Germany at GIFA 2007 & 2011. The customer specific 'Turn- key' COMPAX core shop solution takes the burden off the customers' shoulders!



Compax (Compax Industrial Systems Pvt. Ltd.) has been in the field of manufacturing of foundry equipment since 1983. At Compax, we believe in strengthening our customers by harvesting and adapting “state of the Art” technology” for their Ferrous as well as Non-ferrous foundry operations. The company philosophy rests on three basic pillars namely, Innovation, Reliability and Commitment !

Compax is known for its Pioneering efforts in promoting Amine Cold Box Process in India and it's expertise & process knowhow acquired through in-house R&D efforts and over Three decades of experience in process application in critical areas.

With Two Manufacturing plants in Pune, supported by in-house Mechanical & Electrical Design as well as PLC Programming capabilities and a fully equipped Machine shop, ensure a controlled and well engineered Equipment manufacturing. Further, a full fledged Customer care team caters to the application & after sales support needed by the equipment users.

Backed by these strengths, Compax offers . a complete range of Foundry solutions for the ferrous and non-ferrous foundries.

With more than 35 years of innovation, trust built up and commitment shown over the time, Compax has established a customer base of more than 1500 across India. Besides, Compax

equipments are well accepted today in more than 12 countries like USA, Singapore, Oman, Saudi Arabia, Bahrain, Oman, Egypt, Sri Lanka etc.

Key product lines are cold box core shooters, shell core shooters, Sand Preparation and Distribution systems, Core coating solutions Pollution Control Scrubbers, Casting Finishing solutions and Foundry Automation solutions including Robotics.

Turnkey solutions in the Coreshop area of Foundry is our specialty.

Compax can now team up with Indian foundries to install world class facilities and boost the productivity by offering an end-to-end solution for the entire foundry setup - in Moulding facilities, No Bake sand applications, Coreshop setups, Casting Finishing Automation & Pollution control systems for Amine cold box core shops.





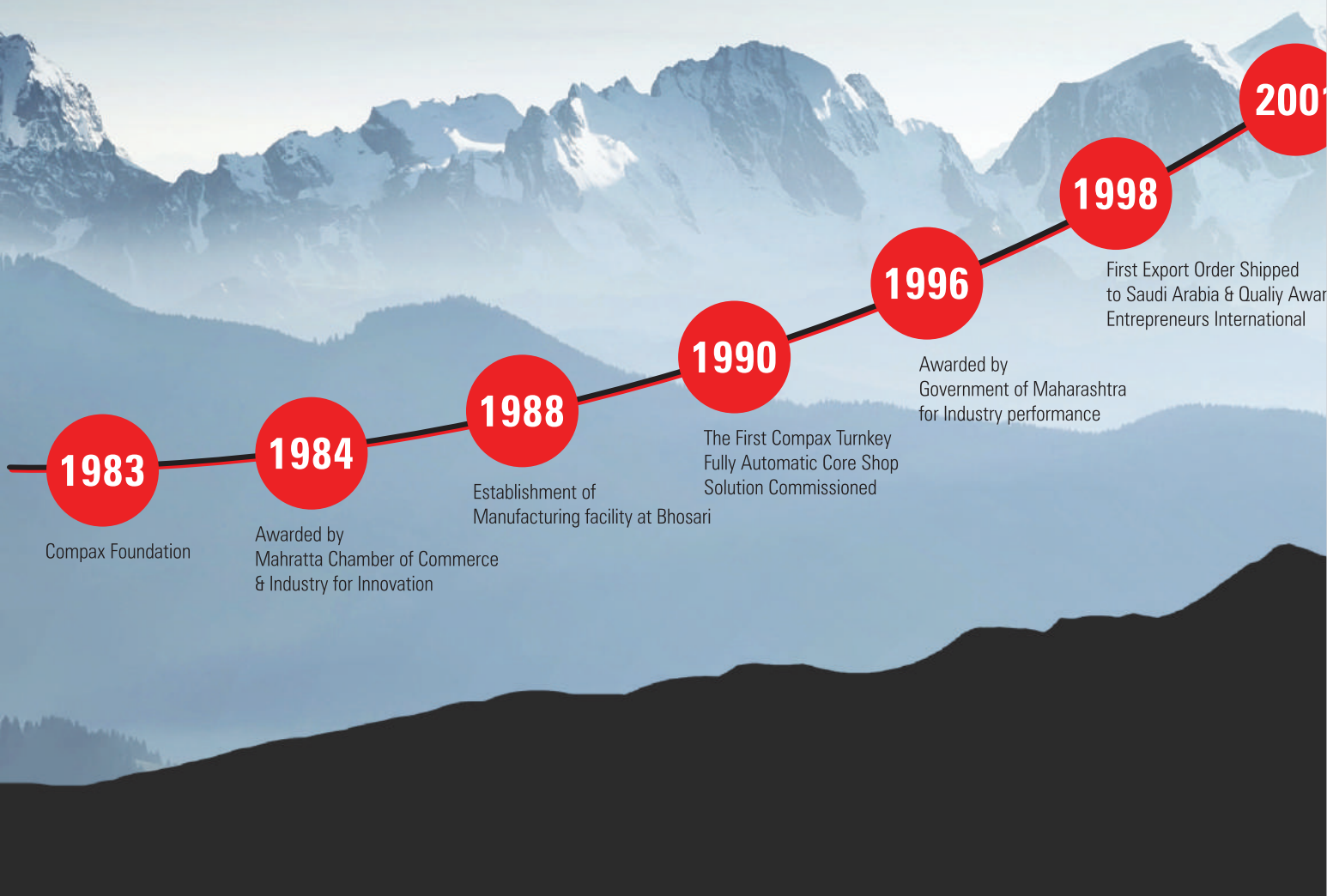
• Redefining The Business Arena

VISION

Providing the foundries & customers with leading edge solutions to match their unique needs of Quality, Performance and Productivity.

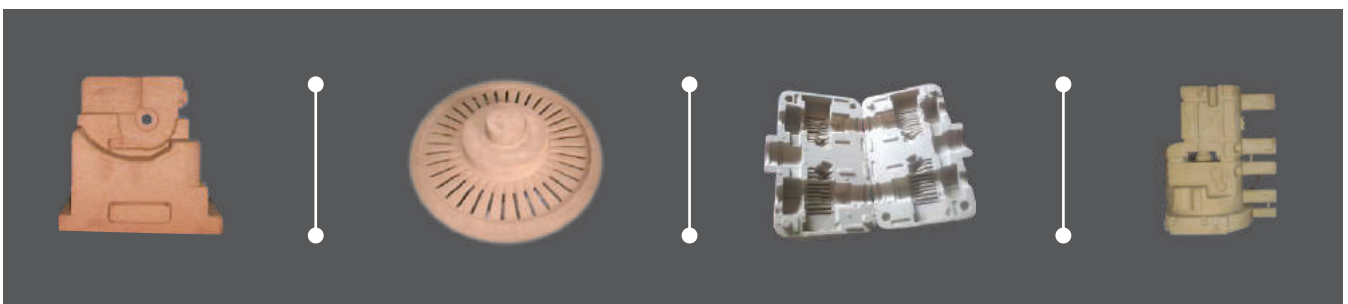
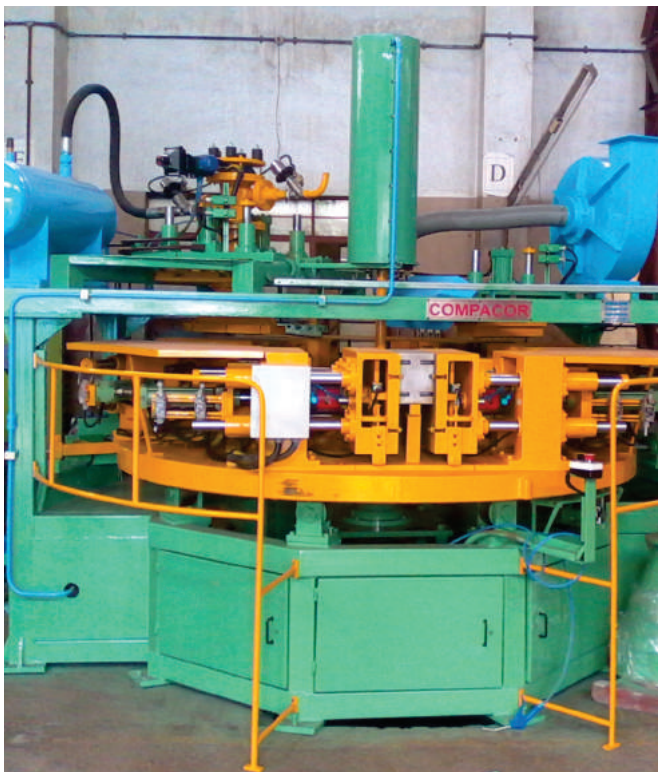
MISSION

To harvest 'State - of - the - Art' technology for meeting the needs of customers to their complete benefit and delight.





d by





FOUNDRY TECHNOLOGY

Core shop Equipments
Continuous Mixers
Green Sand Equipments



ALUMINIUM FOUNDRY TECHNOLOGY

LPDC
GDC
Decoring System



CASTING FINISHING TECHNOLOGY

Automatic Grinding
Deflashing
Manual Grinding

Core shop Equipments

- Coldbox Coreshooters
- Shell / Hotbox Coreshooters
- Robotic COre CEntres
- Sand Preparation & Distribution Systems
- Core Painting / Coating systems
- Core Handling Systems
- Co2 Gas Injection systems
- Core Defining systems
- Automation systems

Continuous Mixers

- Continuous Mixers
- Jolt Squeeze Machines
- Green Sand Moulding
- Vibratory systems

Continuous Mixers

- Pollution Control Systems for Coreshop

Low Pressure Die-Casting Equipments

Gravity Die Casting systems

Auto Pouring systems

De-coring Systems

Automation systems

Casting Grinding solutions

Robotic Casting Deflashing solutions (Aluminum Castings)

Casting Deburring Systems

Casting finishing lines for Brake Discs and Brake Drums

Casting Finishing line for Cylinder Heads and Blocks.

THE EMPOWERED COMPAX CUSTOMER

ENJOYS

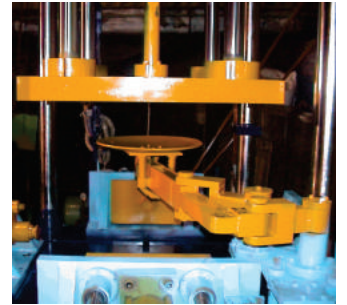
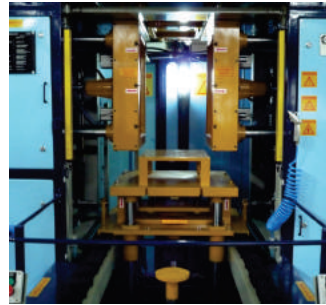
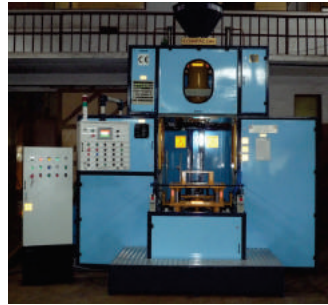
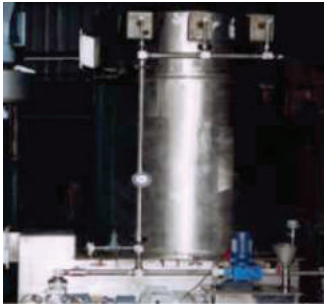
- Higher Technology
- Higher Productivity
- Higher Reliability
- Higher Safety & Flexibility
- High Quality & Economic Core Production

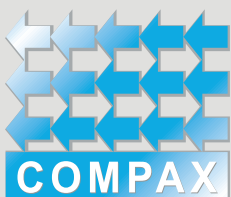
AND CAN BOAST OF

- Higher Output / Unit of Investment
- Higher Output / Unit of Human Resource
- Higher Output / Unit of Energy
- Higher Core Strength / Unit of Consumables
- Lower Core Cost / Castings

AND IS ALSO BACKED BY

- Highly Skilled Engineering Team
- Excellent Manufacturing Facilities
- Dedicated & Customer-sensitive support team
- Compax Process Expertise & Application know how!
- Lower Core Cost / Castings





Compax Industrial Systems Pvt. Ltd.

S-112/10, M.I.D.C., Bhosari, Pune - 411 026. (INDIA)

Tel.: +91 20 27128734 / 35 | **Fax:** +91 20 46767586 | **M.:** +91 9890 663380

Email: info@compaxindia.com / sales@compaxindia.com

www. www.compaxindia.com